



Thinkproject Live in London

# Welcome!

19 November 2025







05

## From Insight to Action: How Network Rail Uses Contract Data to Drive Performance



**Victoria Hill-Stanford**

Head of Commercial Performance &  
Assurance, and Road Fleet for  
NW&C Region  
Network Rail



# Thinkproject Live Network Rail NW&C

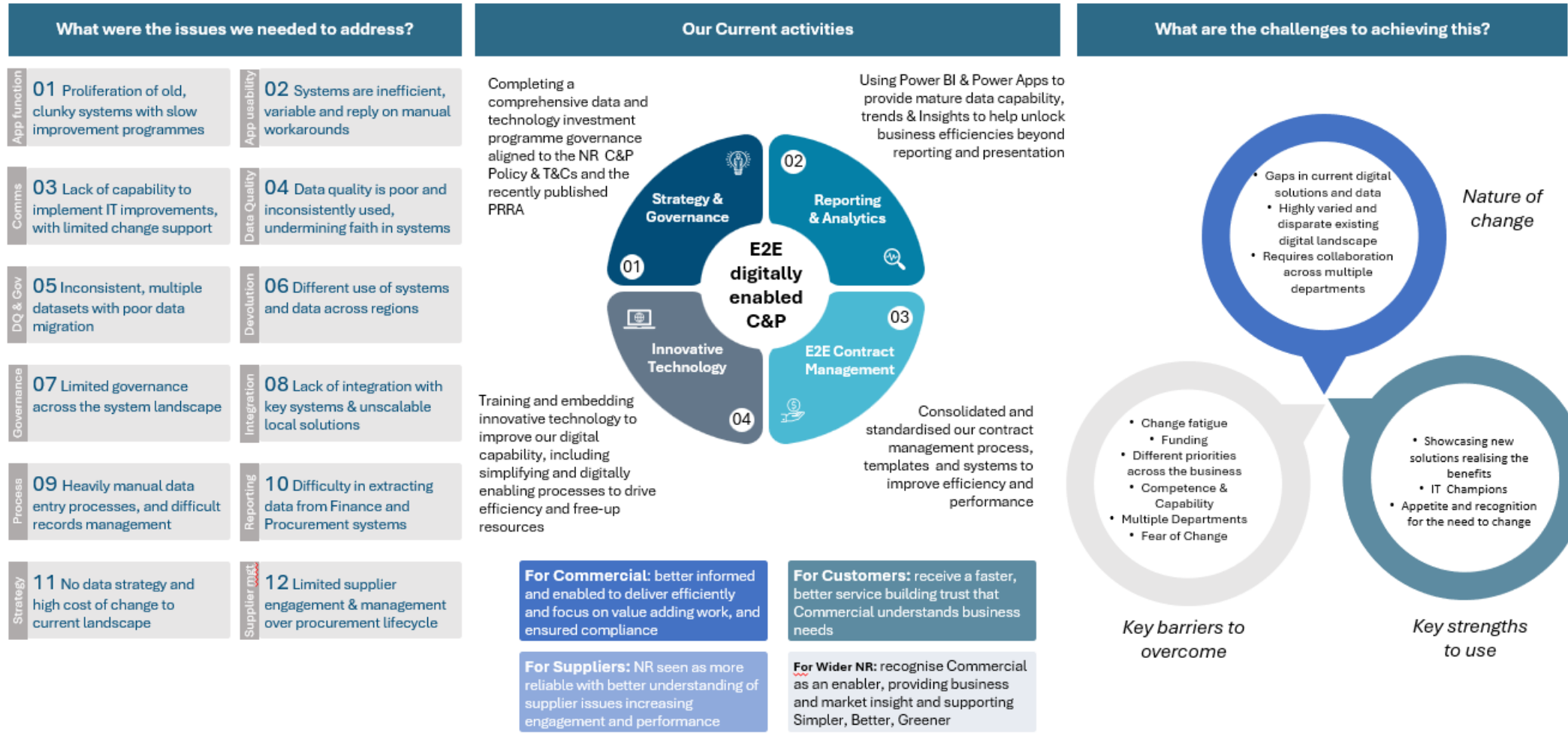
**From Insight to Action:  
Can Contract Data drive supply chain  
performance ?**

**19<sup>th</sup> November 2025**

# How Network Rail Leverage C&P Technology– Our Vision

OFFICIAL

**Our vision for digital transformation in NR :** That we provide our teams and supply chain with an end-to-end digitally enabled C&P service which helps us buy smarter, faster and efficiently manage our contracts to deliver best value for our stakeholders and customers and improves our relationships with our supply base, the public and local communities whilst meeting our legal obligations



# How Network Rail Leverage C&P Technology – Our Timeline

**FY 24/25**

**FY 25/26**

**FY 26/27**

**FY 27/28**

**what**

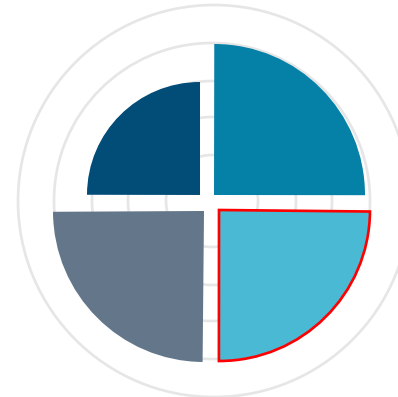
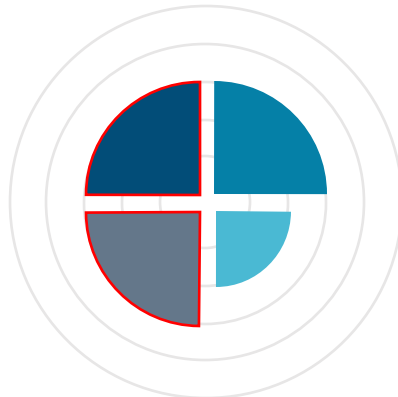
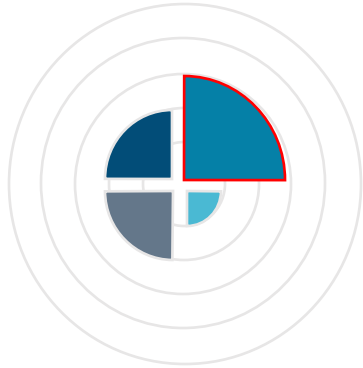
- Optimise current C&P technology to support teams comply with NR Policies & Standards
- Identify IT best practice that would set us up for success)
- Establish a culture and focus to drive process efficiency and automation
- Develop Data and Technology strategy

- Capitalise on Innovative technologies to make our practitioners ways of working more efficient and effective
- Align IT practice and C&P technologies to comply with PRRA Act and NEC4

- Embed and maintain culture of IT architecture improvement
- Join up data from across the full commercial lifecycle and achieve fully automated reporting removing manual manipulation and driving true "Value Add"

- Embed Digital continuous improvement ways of working
- Enhance Data and Information management

**Capability Development**



We will follow a comprehensive, agreed digital strategy and have defined governance to manage the development and integration of our digital landscape

We will use innovative technology to improve our digital capability, including simplifying and digitally enabling processes to drive efficiency and free-up resources



We will provide a more mature data capability to help unlock business value beyond reporting and presentation

We will consolidate and standardise our contract management process and systems to improve efficiency and performance

**Enablers**

Formal Change Management Programme

Knowledge Share & Communities of Practice

Digital Upskilling / Training

**Technology Journey**

Power Apps / Power BI  
BRAVO  
ThinkProject  
Competefor  
Oracle  
RailDiary Sharepoint  
E-Learning – BI / View 360 / ELS etc

- Gather (automated Site Diary)
- MethodGrid commercial playbook
- Digitisation of Governance Forms
- Digitisation of PRRA Notices
- Complete outstanding Power BI Dashboards

- Go See / Ideas Hoppers
- Industry/Peer Best Practice Reviews & Knowledge Share
- Support Self-service regional improvements
- Understand alignment of C&P technology with other members of GBR

- Establish CP8 C&P Technology Strategy



Inn October 2023, the Office of Rail and Road (ORR) published the final determination of Network Rail's £43.1bn plans (£38.5bn in England and Wales, £4.6bn in Scotland) to deliver a safe and customer focused railway. The plans cover the five years from 1 April 2024, known as Control Period 7 (CP7).

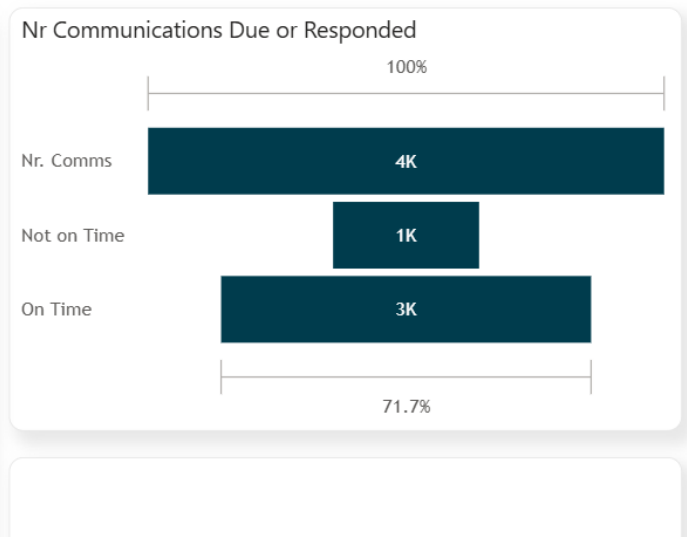
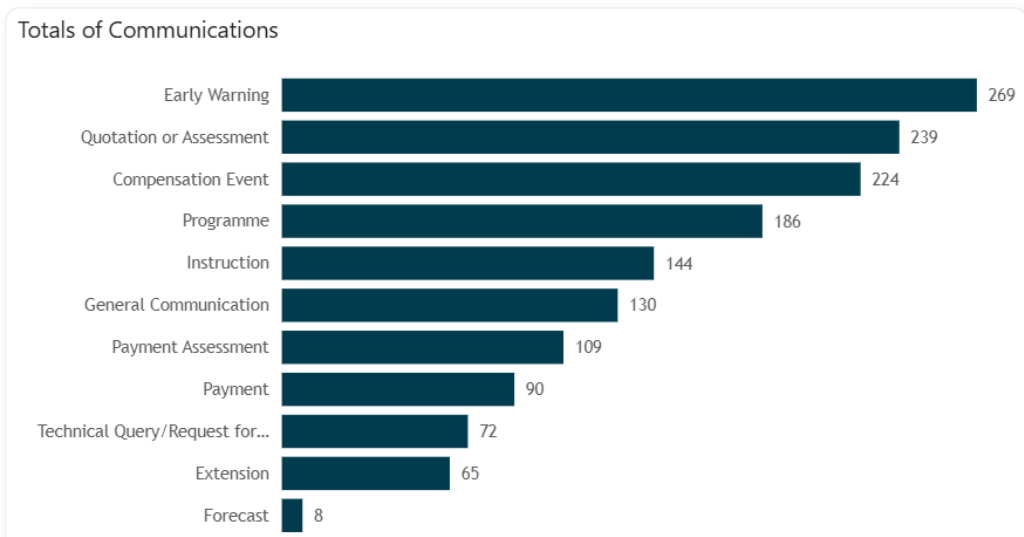
### North West and Central region in numbers

- 246.5 million annual rail passenger journeys
- 1.3 million passengers travel through this region each weekday
- 571 stations
- 4 managed stations: Birmingham New Street, Manchester Piccadilly, Liverpool Lime Street, London Euston
- We are 24% of Britain's railway
- 6,724 passenger and freight services per day
- 700,000 tonnes of freight is moved each week
- 712 level crossings
- 7,100 bridges





# Unlocking the Power of Contract Data in Thinkproject – Context and Scale



We are currently delivering 146nr Worksites in Think Project with a value of £230M

This will be complemented with the use of automated site diaries that link to the CEs which we are starting to roll out in December 2025.

SNOWFLAKE FACILITATED REPORTING



# Unlocking the Power of Contract Data in Thinkproject – Driving Efficiencies through Real Time Insights

NW&C CEMAR | Oracle Validation

Clear all filters

Commercial & Procurement

Contract Count: 29

Contract Name	PO Number	Original Contract Price	Current Contract Price	Contract Creep	CCP + QCE	PO Value	Billed PO Value	PO - CCP	CCP + QCE - PO	AFC All Stages	AFC - CCP	Project Budget	Budget - CCP	AFC Expos
144086_6035878_6.3.1_Arkwright_PACE6	6035878	0.00	0.00	0.00	0.00	2,210,259.21	£0	2,210,259.21	-2,210,259.21	0.00	0.00	2,210,259.21	2,210,259.21	
146265_5850640_6.2.1_HNR Great Brington Cutting_GRIP 6	5850640	0.00	0.00	0.00	588,599.68	4,174,019.32	£2,291,661.63	4,174,019.32	-3,585,419.64		0.00		0.00	-588.5
150100_5818458_6.2.1_KCS1: Kildgrove Station [U&D]_PACE 3-4	5818458	1,187,291.26	1,189,958.68	2,667.42	1,208,552.85	1,224,521.55	£1,224,521.55	34,562.87	-15,968.70		-1,189,958.68		-1,189,958.68	-1,208.5
155370_6032144_5.1.1_LC1/38 Ridgeway_PACE5	6032144	0.00	0.00	0.00	0.00	965,933.92	£0	965,933.92	-965,933.92		0.00		0.00	
156562_6025614_6.2.1_Harlesden Embankment Main Works_PACE6	6025614	0.00	0.00	0.00	18,947.12	5,347,153.78	£0	5,347,153.78	-5,328,206.66		0.00		0.00	-18.9
157579_5816305_6.4.1_Roleston and Chapel Milton_PACE6	5816305	0.00	10,055.47	10,055.47	47,424.68	118,097.47	£118,097.47	108,042.00	-70,672.79	108,042.00	97,986.53	118,098.00	108,042.53	60.6
161667_5588190_6.32.1_Marylebone IECC Updates_PACE 4	5588190	389,710.00	398,920.00	9,210.00	398,920.00	398,920.00	£398,920	0.00	0.00		-398,920.00		-398,920.00	-398.9
161704_5843157_6.12.1_Support Service_PACE 2	5843157	72,543.71	142,453.71	69,910.00	142,453.71	140,707.91	£95,302.36	-1,745.80	1,745.80		-142,453.71		-142,453.71	-142.4
164358_5846366_6.25.1_Support Service_PACE 2	5846366	72,543.71	269,586.41	197,042.70	269,586.41	269,586.41	£204,385.79	0.00	0.00		-269,586.41		-269,586.41	-269.5
164936_5796984_6.3.1_CBC1 34 Levens Viaduct_PACE 3	5796984	4,441,776.12	4,466,210.92	24,434.80	4,561,568.38	5,058,999.98	£5,058,999.98	592,789.06	-497,431.60		-4,466,210.92		-4,466,210.92	-456.1



Integrate Data from A to B for **immediate visibility of financial exposure**

Need right partners to provide **Agile Response to Changing Priorities**

Longer term strategy to ensure your IT strategies and solutions provide **Enhanced Governance and Assurance**

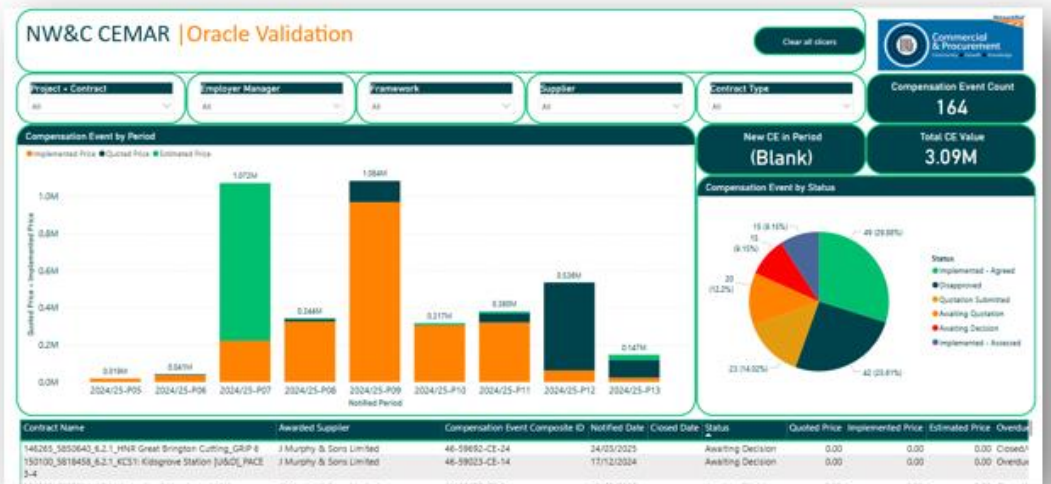
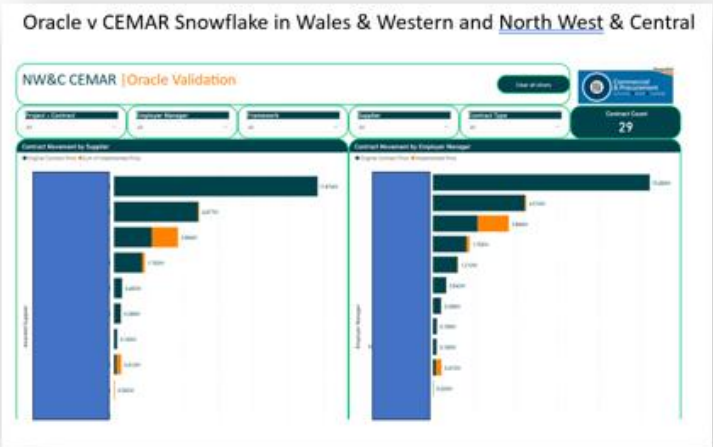
SNOWFLAKE FACILITATED  
REPORTING





# Unlocking the Power of Contract Data in Thinkproject – Driving Efficiencies through Real Time Insights

Real-time data facilitates smart decisions by **focusing on the whole rather than hearsay or siloed perception**. Here's why:





# Thinkproject Live Network Rail NW&C

**From Insight to Action:  
Can Contract Data drive supply chain  
performance ?**

**[Victoria.hillstanford2@networkrail.co.uk](mailto:Victoria.hillstanford2@networkrail.co.uk)**

**thinkproject**