



Thinkproject Live in London

# Welcome!

19 November 2025





06

# Transforming Contract and Asset Management with Thinkproject Platform



**Max Fritze**

Director Product Marketing  
Thinkproject





The **world's longest immersed undersea tunnel**, € 7.4Bn budget

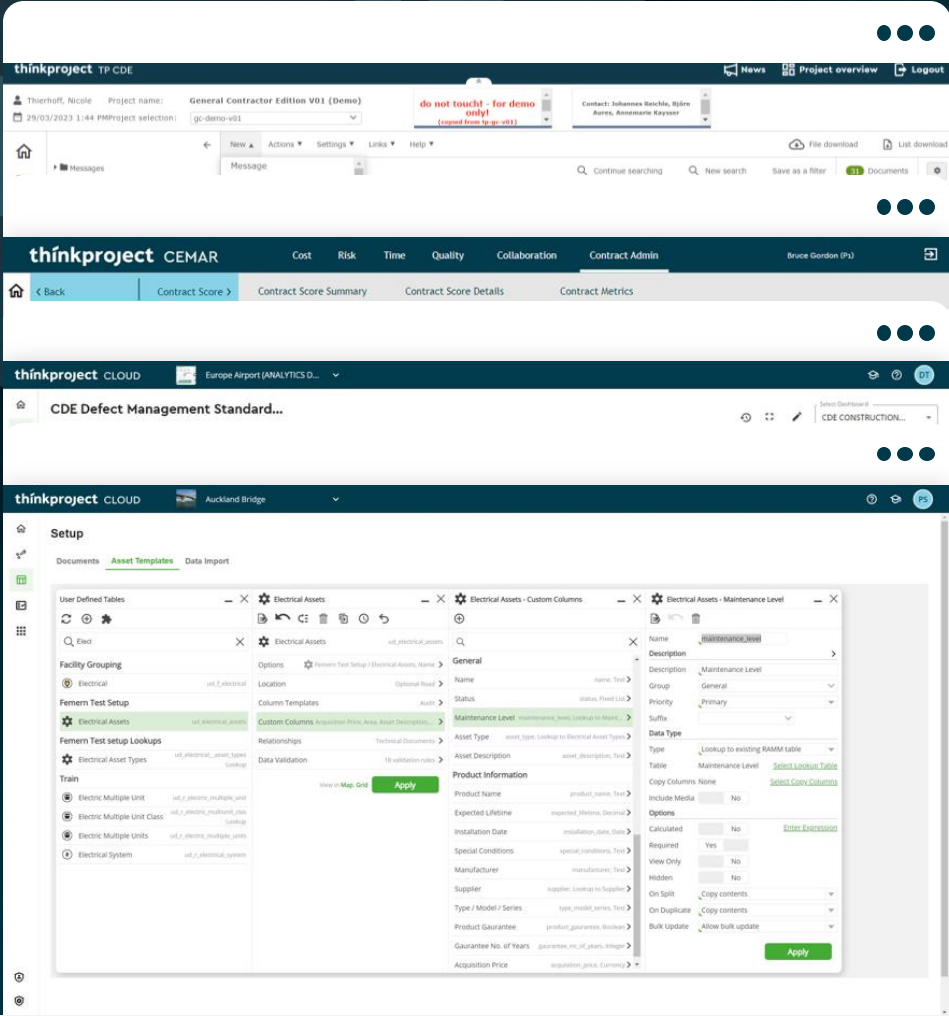
**Shortening the connection** between Scandinavia and central Europe

Includes **new rail and road infrastructure** on the Danish and German side





# Management of complex international large-scale projects



Data management over the entire life cycle

Reporting across all assets



- CDE
- VDC
- CONTRACTS
- ANALYTICS
- HANDOVER

**Femern**  
*Sund ≈ Bælt*

# £12.1B

annual losses due to incompatible software\*





WAYSS & FREYTAG  
INGENIEURBAU

**€1.4bn PPP upgrade** of one  
of Berlin's busiest routes

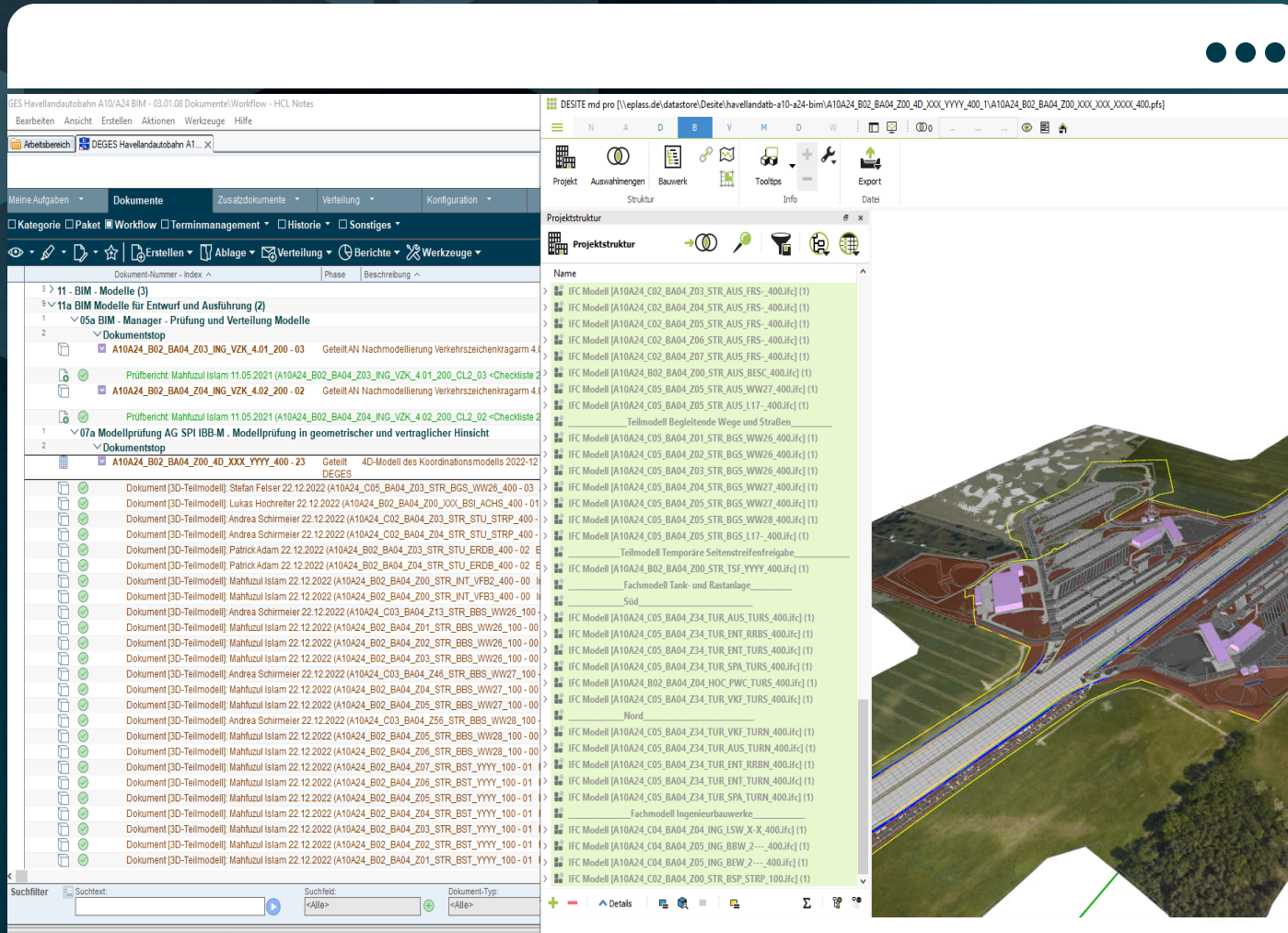
**Expands** A10 to six lanes,  
rehabilitates A24, builds  
40+ bridges

**Relieves congestion**  
and **improves long-term**  
**traffic safety**





# Model-based infrastructure projects



CDE

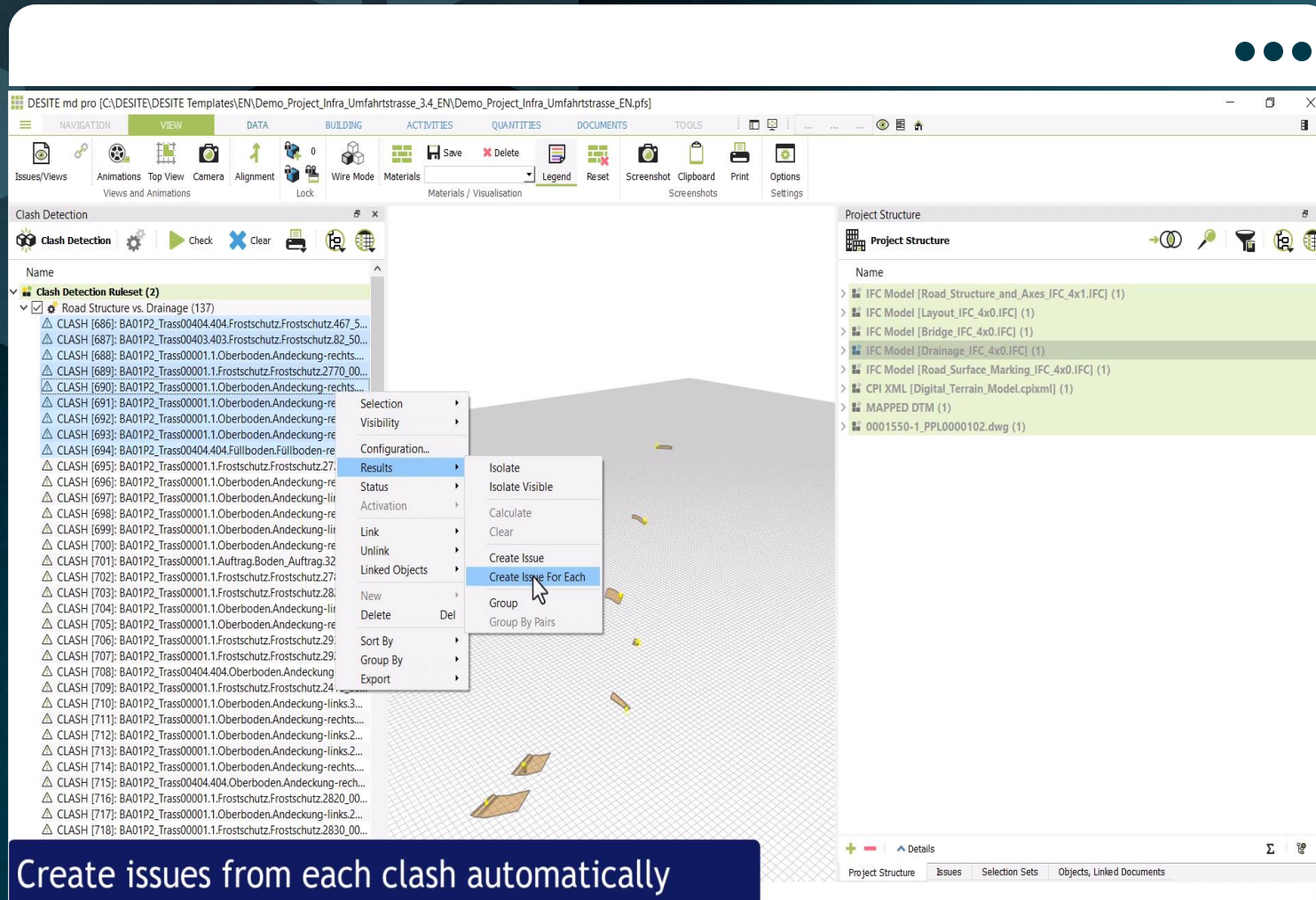
VDC



WAYSS & FREYTAG  
INGENIEURBAU

# Model-based infrastructure projects

Check latest designs for constructability assurance against configurable validation rule sets



Create issues from each clash automatically



CDE

VDC

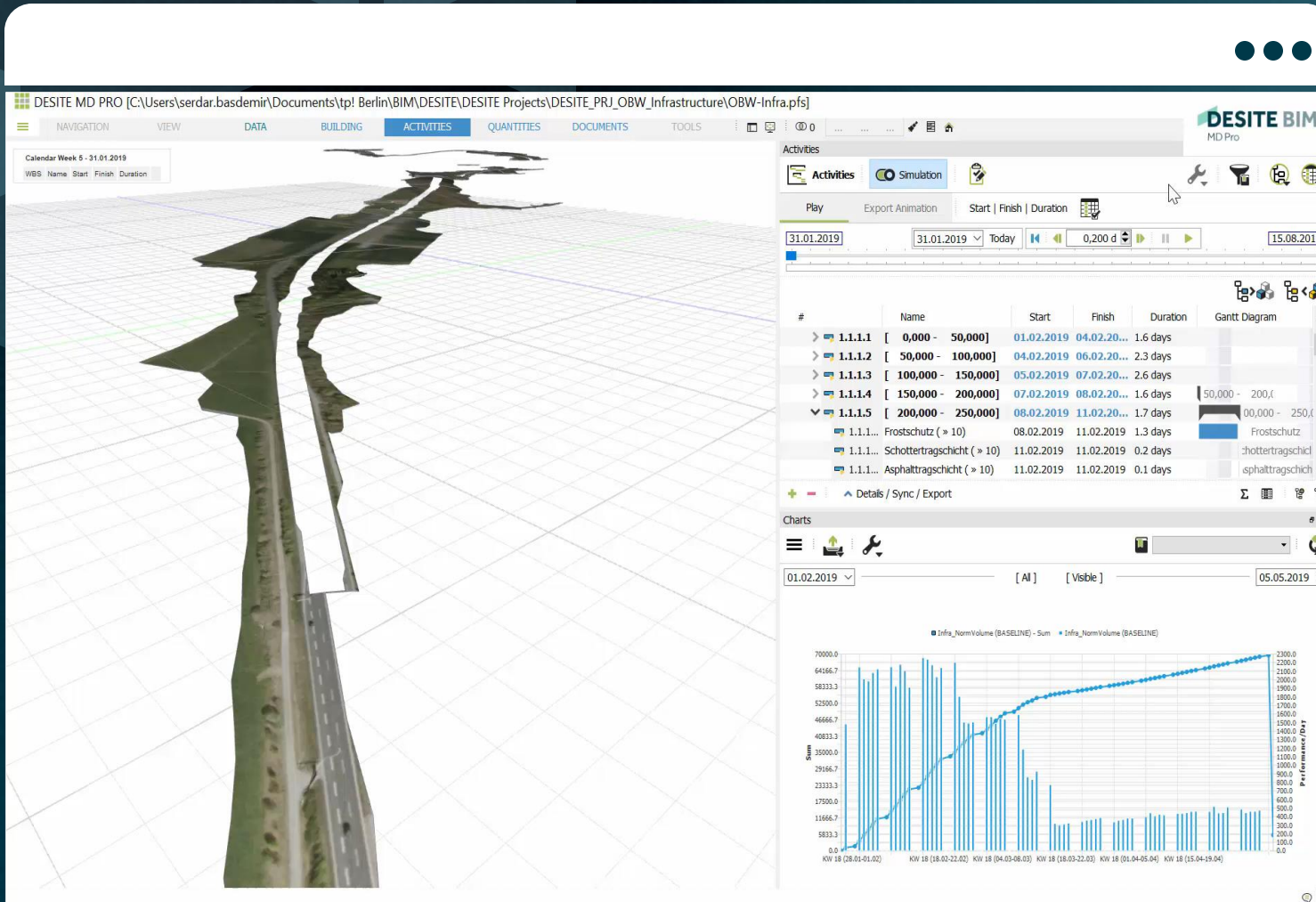
W&F

WAYSS & FREYTAG  
INGENIEURBAU



# Model-based infrastructure projects

Connect BIM Data and the schedule to identify potential risks & optimise construction sequencing (4D)



CDE

VDC

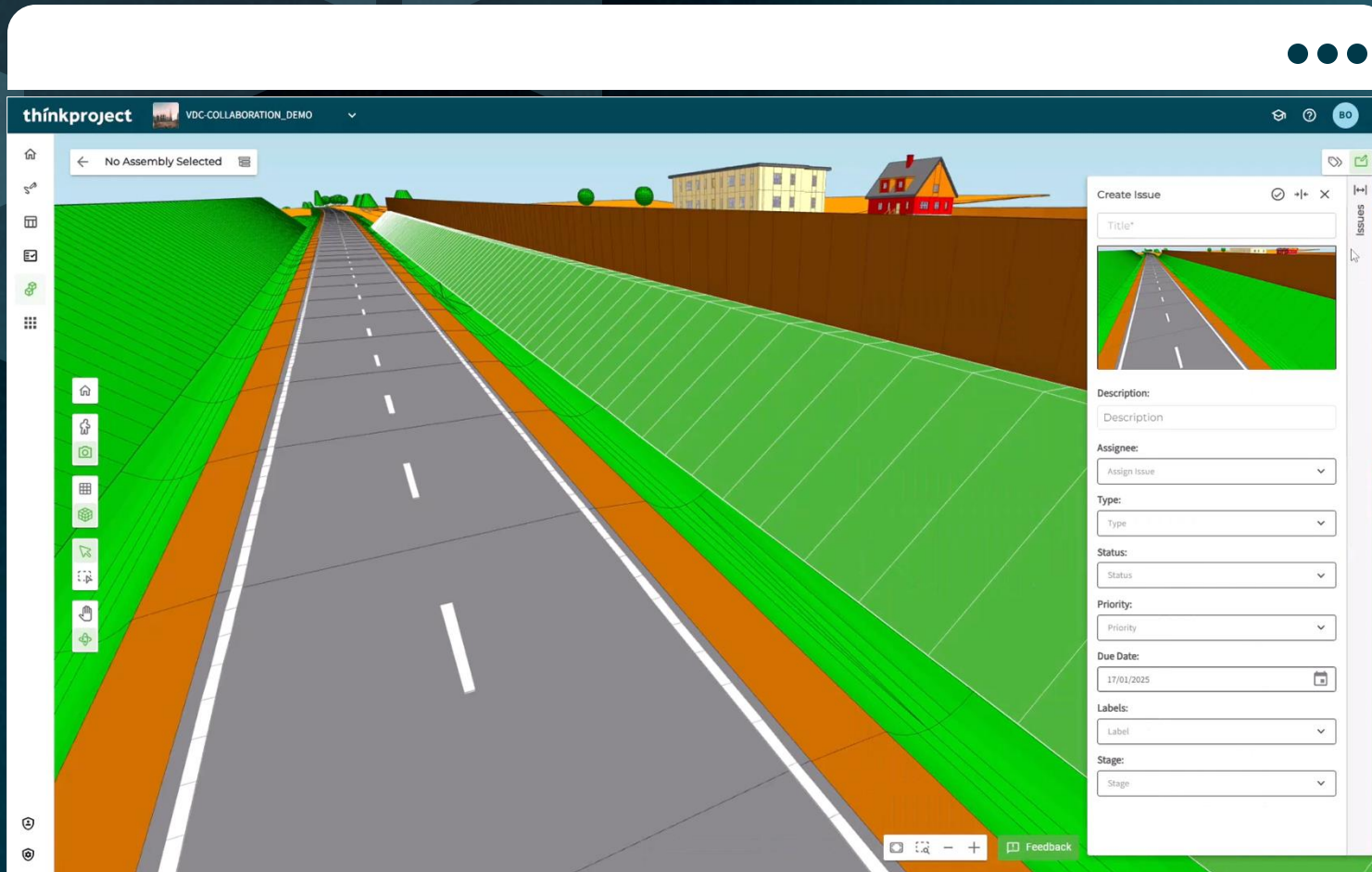


WAYSS & FREYTAG  
INGENIEURBAU



# Model-based infrastructure projects

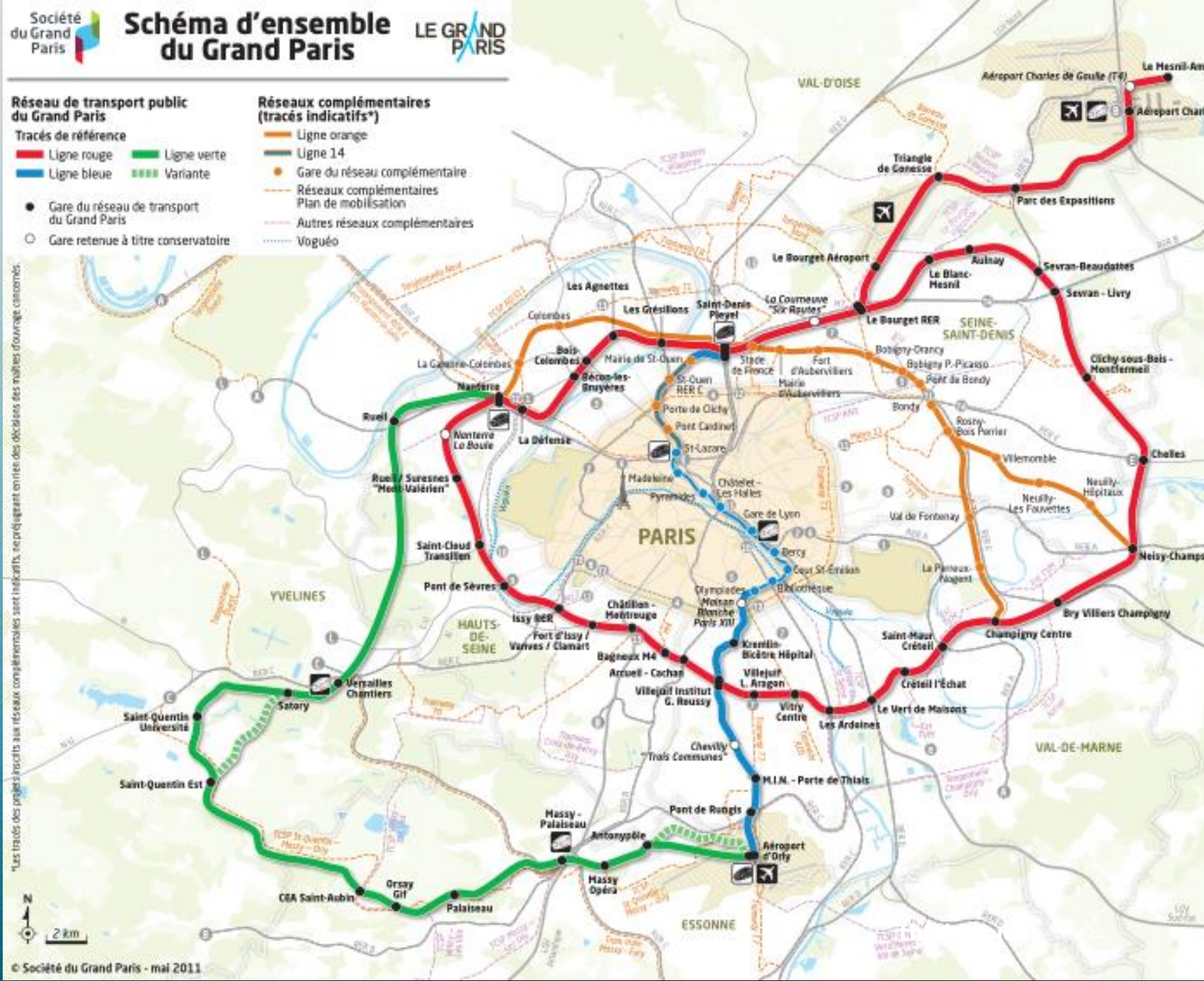
Visualise the project, track and manage coordination issues collaboratively



**WAYSS & FREYTAG**  
INGENIEURBAU



- Europe's largest current infrastructure project with **€ 42 billion investment**
- Massive expansion of the **Paris rapid transit network** that aims to transform the Greater Paris region
- **200 kilometers** of new, automated metro lines and **68 new stations**, plus extensions to existing lines.









# Société des grands projets

GED - Recherche Globale

Rechercher

Accueil

Systèmes

Administration SPOC

Gestionnaire Documentaire

Consulter La GDC

Gérer La GDC

Tools

Paramétrage GED des marchés systèmes

Dossiers de Classement

1. Documents modèles

2. Marchés transverses GPE

3. Ligne Rouge

3.1. Ligne Rouge - Marchés transverses

3.2. Marchés Ligne 15 Sud

3.3. Marchés Ligne 16

3.4. Marchés Ligne 17

3.5. MOE Partagée

4. Ligne Verte

Livrable par marché

SYS - Ligne verte

SYS - Marchés Ligne 15 Sud

SYS - Marchés Ligne 16

SYS - Marchés Ligne 17

SYS - Marchés transverses Ligne Rouge

SYS - MOE partagée

Pièces des marchés avant notification

Dossiers de Classement

1. DCE Ligne 15 Sud

2. DCE Lignes 16/17

3. DCE transverses Lignes 15/16/17

4. DCE Ligne 18

5. DCE Transverse GPE

Organisation des chantiers DSTE

Dossiers de Classement

1. Accès Power BI (Interne DSTE)

2. Présentations organisations des chantiers

3. Documents chantiers de référence

4. Documents modèles

5. Transfert de site de chantiers et mise à disposition

6. Demandes d'accès externes aux sites de chantiers

Support de formation entreprise / création du compte GED entreprise / création des comptes GED utilisateurs entreprise / création des processus de VISA / Liste prévisionnelle des livrables

Recherches Elastic Search filtrées sur l'Emetteur



CDE

Société  
des Grands  
Projets

Grand  
Paris  
express

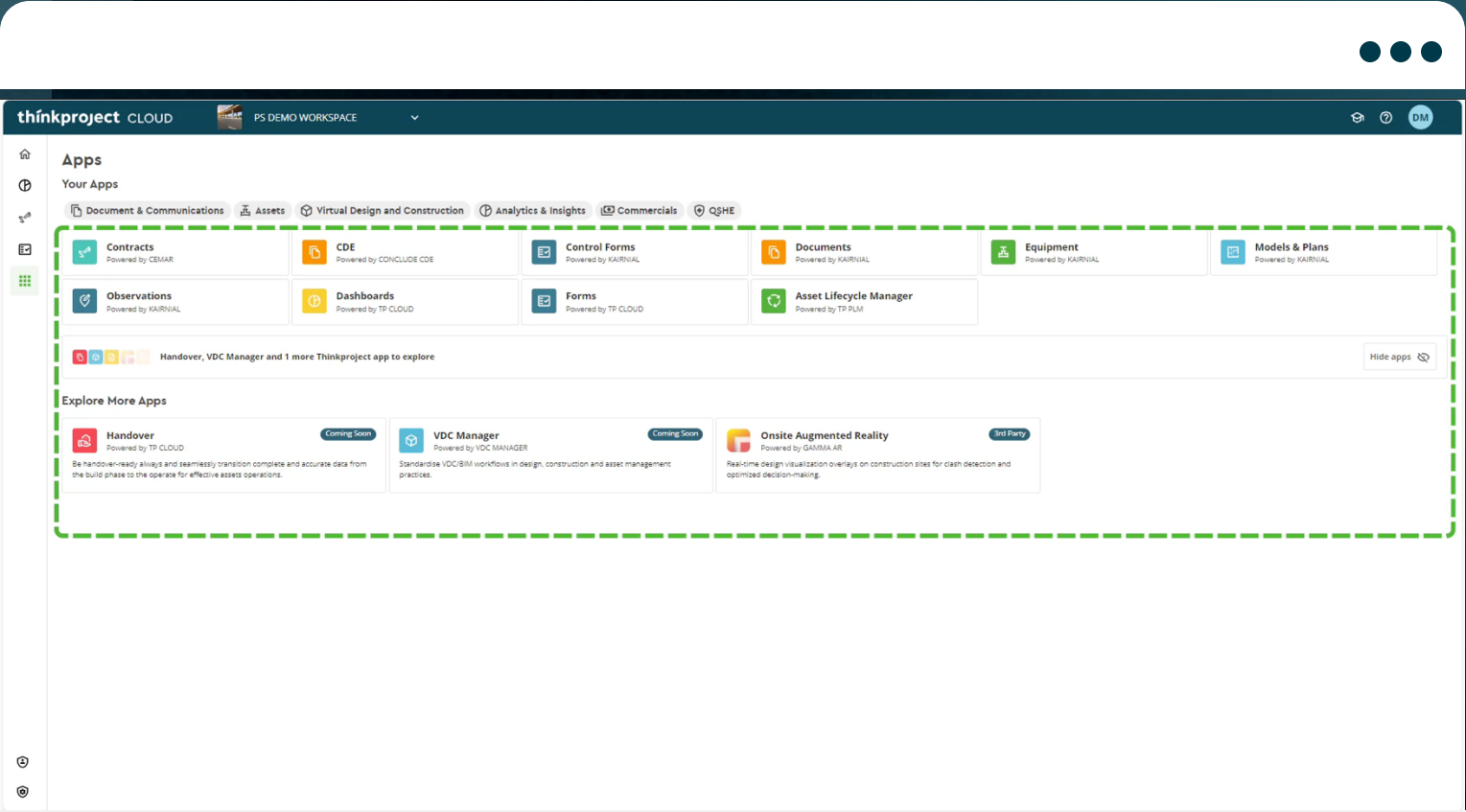


south east water

- Providing **drinking water** to customers **across the South East of England**
- Serving over **2-million customers**
- Network of over **9,000 miles of pipeline** across Kent, Sussex, Surrey, Hampshire, and Berkshire.







CONTRACTS

CDE

south east water



**thinkproject**